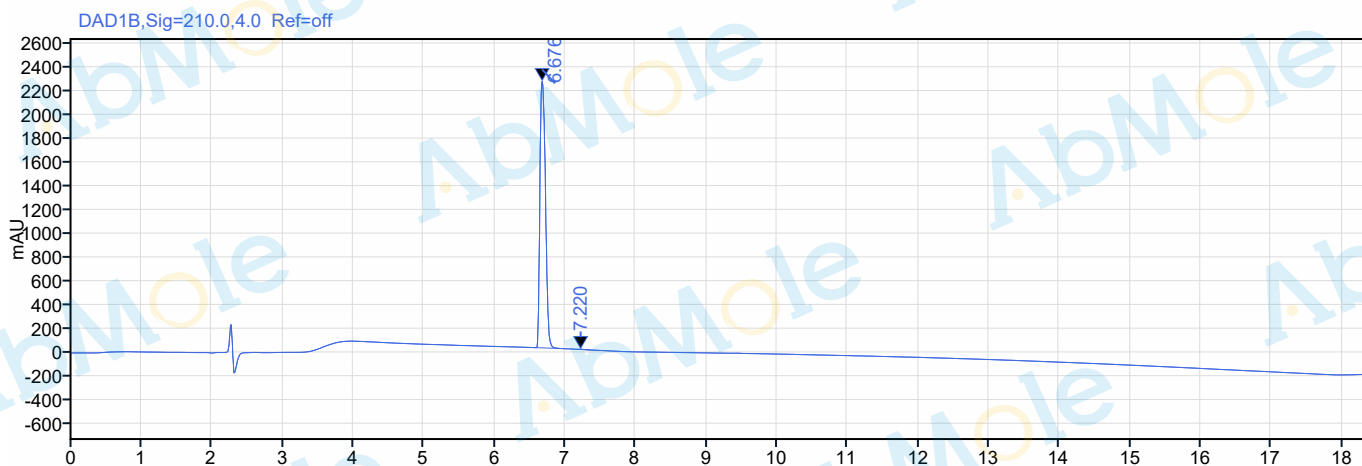




**Sample name:** M1664-AZD2281 (Olaparib)-16  
**Instrument:** A010  
**Inj. volume:** 2  
**Acq. method:** HPLC  
**Processing method:**  
**Manually modified:**

**Injection date:**  
**Location:**  
**Type:**  
**Sample amount:**



**Signal:** DAD1B, Sig=210.0, 4.0 Ref=off

RT [min]	Area	Height	Area%
6.676	12252.98	2248.69	99.93
7.220	8.25	1.82	0.07